

...a sound decision

Standardised for all ATLAS Echosounders

Fast and Reliable

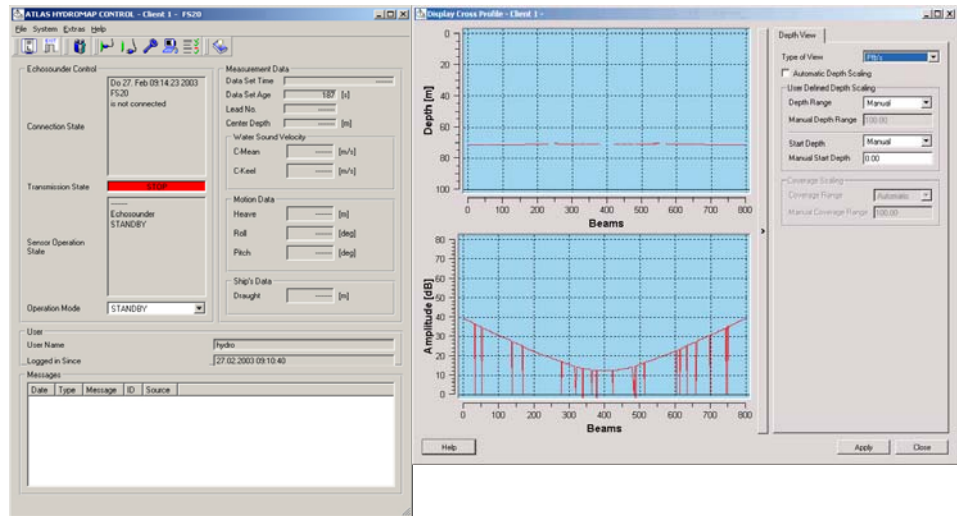
Client/Server Architecture

Multi-User, Multi-Window

Intuitive Graphical User Interface

Object-Oriented Design

Windows™ Platform



ATLAS HYDROMAP CONTROL

SOFTWARE FOR CONTROL OF ATLAS ECHOSOUNDERS

ATLAS HYDROMAP CONTROL is a flexible sensor steering and monitoring software package for all multibeam echosounders and sub-bottom profilers from ATLAS HYDROGRAPHIC.

ATLAS HYDROMAP CONTROL provides a complete set of operating functions for

- Echosounder configuration and test
- Echosounder control
- Data visualisation
- Quality control
- User and graphical user interface administration.

The operator has full system control. All echosounder information is displayed in a well arranged manner. Essential settings are fully protected against unauthorised change.

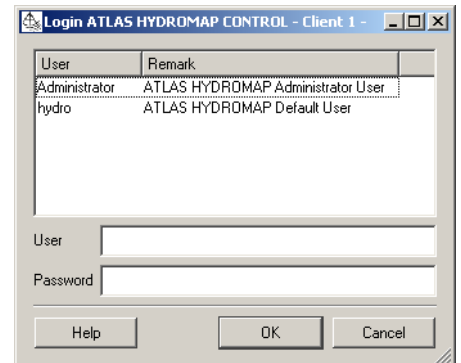
The client/server and multi-user design provides the possibility to operate the echosounder from different operator stations within a network infrastructure in co-operation with third party data acquisition software.

Based on its multi-sensor capability all multibeam echosounders and sub-bottom profilers from ATLAS HYDROGRAPHIC can be supported from one or more computers in a ships network.

ATLAS HYDROMAP CONTROL runs on Windows™ XP based computer platforms.

FEATURES

- ATLAS echosounder control software
- Supports ATLAS FANSWEEP 20, ATLAS HYDROSWEPT and ATLAS PARASOUND
- Comprehensive echosounder parameter control
- Storage of parameter settings
- Multi-user and multi-client capability
- Multi-sensor control from each echosounder
- Data quality monitoring and management including sonar visualisation tools, automatic alarms and log files
- High-performance standard computer



THE SOFTWARE AT A GLANCE ...

Comprehensive ATLAS
Echosounder Toolbox
Client/Server Architecture
Multiple Parameter Sets
Multi-User
Multi-Client
Multi-Sensor
Data Quality Monitoring
and Management

ATLAS HYDROMAP CONTROL

SOFTWARE FOR CONTROL OF ATLAS ECHOSOUNDERS

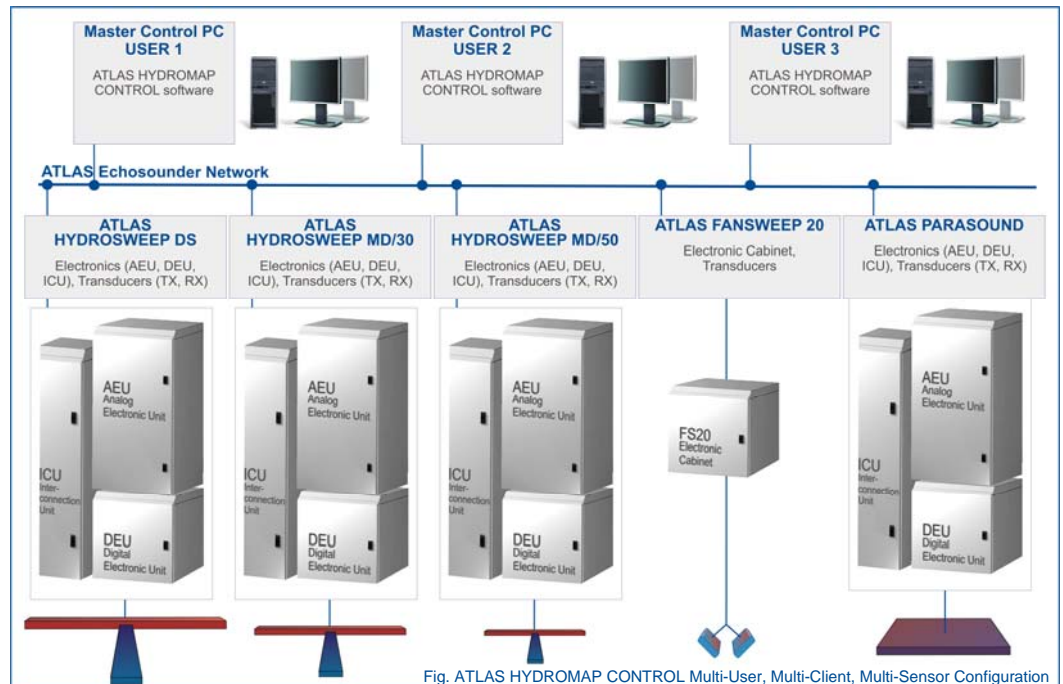


Fig. ATLAS HYDROMAP CONTROL Multi-User, Multi-Client, Multi-Sensor Configuration

FUNCTIONALITY

- All ATLAS echosounder setup, configuration and test
- Full range of possible control parameters (exemplary listing)
 - Operation modes: survey, object and calibration
 - Profiling modes: full, sediment, water column, manual, off
 - Survey: minimum and maximum depth, bathymetric coverage, sidescan coverage, number of soundings, equal-angle and equal-footprint
 - Transmission: frequency, source level, source level control mode (e.g. ASLC), shading, pulse length, pulse shape, pulse type (CW, chirp, Barker), pulse sequence
 - Reception: gain, TVG, shading, tracking window, threshold, output sample rate
- System flexibility and scalability
 - Multiple users can control ATLAS echosounders with hierarchical user permission in one network infrastructure
 - Each user may control each echosounder from multiple operator control stations (multi-client)
 - Each user may control each echosounder from each operator station (multi-sensor)
- Online help functions are based on HTML documents which are automatically activating via the default Windows™ HTML browser
- Data quality monitoring tools
 - Configurable cross profile presentation
 - Trace measurement data acquisition and amplitude visualisation
 - Configurable automatic acoustic alarms
- Data quality management tools
 - Logging of complete parameter sets
 - Logging of history
 - Logging of system messages
 - Logging of calibration information
 - Scheduling of next calibration

TECHNICAL CHARACTERISTICS

- Client/server architecture
- Internal SQL data base
- CORBA communication layer (omniORB)
- Object-oriented software design

RECOMMENDED HARDWARE CONFIGURATION

- State-of-the-art high performance PC with appropriate processor, RAM and hard disk
- Two TFT monitors
- CD and/or DVD-RW drive for data exchange
- Sound card with loudspeaker
- 1 GBit/s network controller
- Operating system Windows™ XP

Contact

ATLAS HYDROGRAPHIC GmbH
Kurfürstenallee 130
28211 Bremen, Germany
Tel +49 421 457-2259
Fax +49 421 457-3449

www.atlashydro.com
sales-hydro@atlas-elektronik.com