

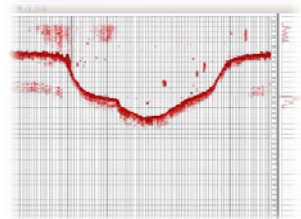


# Anatomy of a Teledyne Odom Single Beam Echo Sounder

**Durable Amphenol Connectors.** The marine environment is tough on electrical connectors, so we use the best metal connectors available for repeated use.



**Ethernet Connectivity.** Reduces the need for several RS232 connectors and allows the full echogram to be sent to acquisition software.



**A Paper or Digital Chart** is available on several of our sounders, giving the flexibility of a paper record at the same time as a digital output.

**GPS Connectivity** through either an optional internal survey grade GPS or external unit. The Hydrotrac II comes with a simple GPS for accurately time tagging survey data.



**Tough Aluminum Cases.** Welded aluminum resists corrosion and houses the electronics for years of reliable use. For dual frequency surveys in open boats, the CVM is housed in the industry standard Pelican Storm case.

**Precision depth data.** A hallmark of Odom sounders for over 25 years, and a feature we never compromise on.

**Frequency Agility.** The entire range of Teledyne Odom sounders will accept a wide range of transducer frequencies. In many cases there may not even be a need to replace your existing survey quality transducer.



Echotrac MkIII



CV100



CVM



CV200/300



Hydrotrac II



**TELEDYNE ODOM HYDROGRAPHIC**  
1450 Seaboard Avenue  
Baton Rouge  
Louisiana 70810  
USA  
Tel: +1 (225) 769 3051  
[odom@teledyne.com](mailto:odom@teledyne.com)